



SysAidTM Administrator Tools Installation

March 2004



Before SysAid can view, manage, and remote control your assets, you must install the SysAid Administrator Tools. This guide will teach you how.

After logging into SysAid, go to "Downloads" in the sidebar. Click on "SysAid Administrator Tools", and save the file, which is named SysAidTools.exe, onto your hard disk.

When you execute the file, you will enter a setup wizard (figure 1).

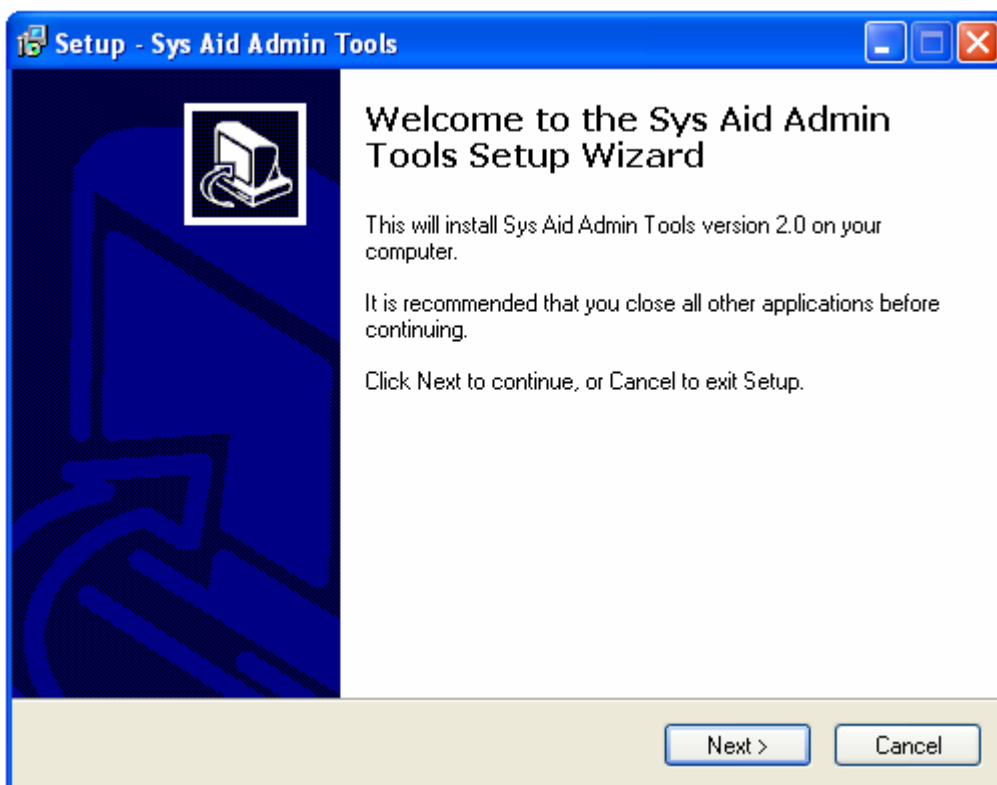


Figure 1

The second screen asks you to input your account information (figure 2).

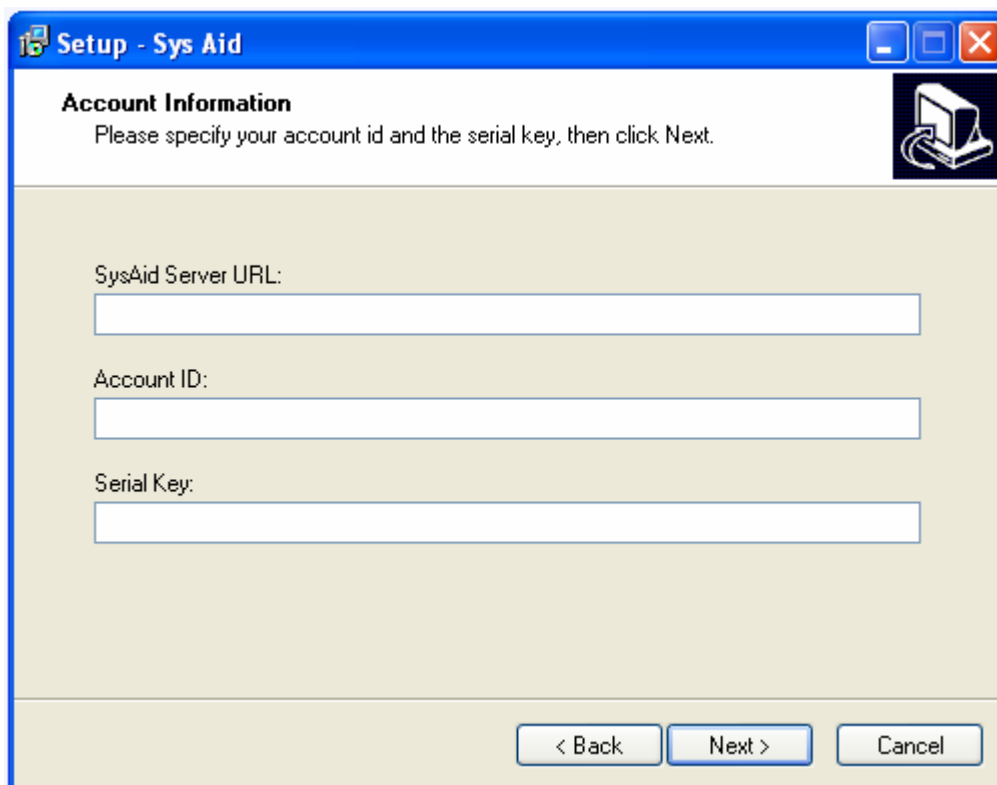


Figure 2

Into the field "SysAid Server URL", input the address of the server SysAid is installed on. For example, if the server has an IP address of 82.166.145.23, input "http://82.166.145.23" into the field.

Into the field "Account ID" input your account ID, which you can see in the top bar of SysAid.

Your Serial Key appears on the Download page in SysAid. Simply copy the key from SysAid, and paste it into the wizard.

If the information is correct, clicking "Next" will take you to the next screen (figure 3).



After you select a folder for SysAid, click "Next". Now, you will be prompted to create a shortcut for SysAid (figure 4).

In the next screen, you will see a summary of the inputted information, and a chance to edit it (figure 5). If the information is all correct, click "install".

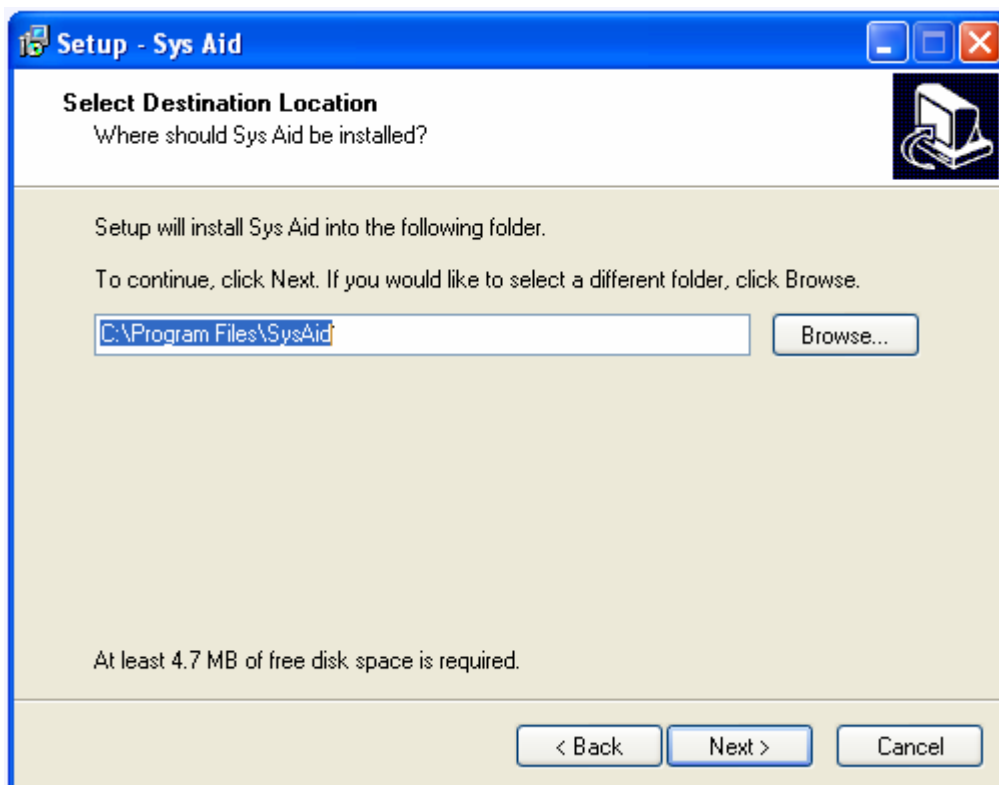


Figure 3

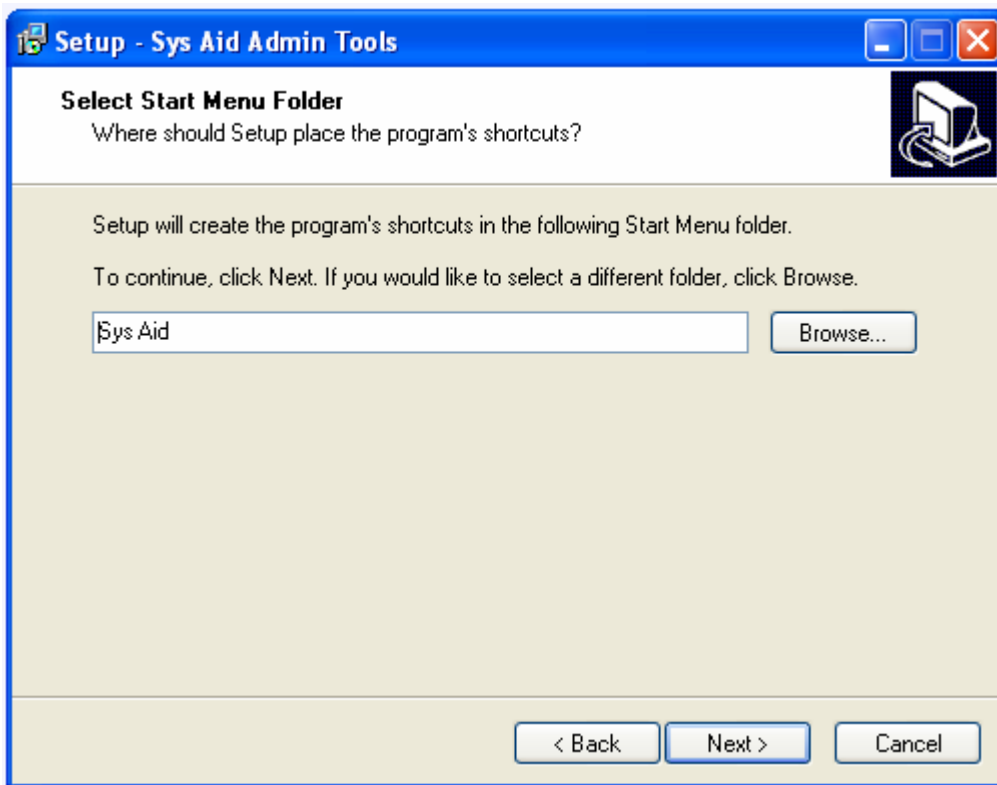


Figure 4

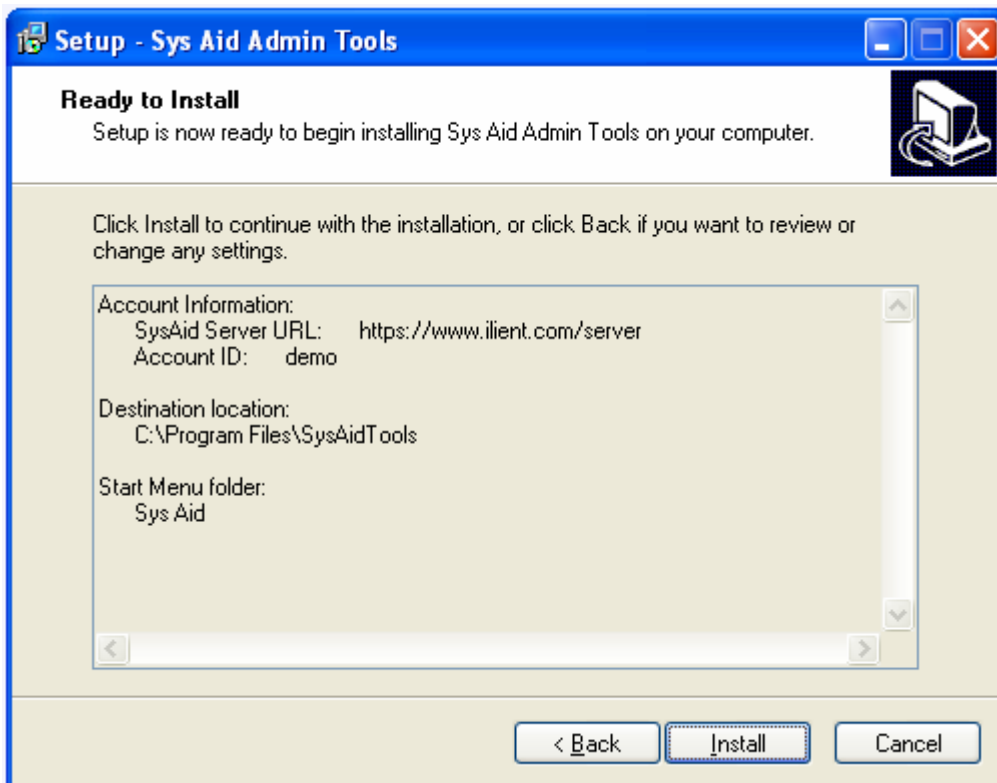


Figure 5



Your administrator tools will be installed. On most machines, the shortcut will be Start → All Programs → Sys Aid.

The Deployment Tool will let SysAid see the assets on your network. To learn how to run the tool, consult the Deployment Tool Guide.

If you have any questions/comments this guide does not address, you may visit our support page at www.ilient.com/contact_support.htm. You may also contact us directly at support@ilient.com, or (if you are a registered user) log into our support account.